

# Saber Start Month

For online access and digital copies go to our school's website at

[www.campbellhigh.org](http://www.campbellhigh.org) → Click on the Parent & Community tab → Select Saber Start  
Start Date for School Year 2024-2025 Freshmen will start school on  
Tuesday, August 6, 2024 and all other grades on August 7, 2024

## Student Fee Payment

Mail-In Fee Payment Form link:

<https://shorturl.at/qNYOG>

## Student Fee Payment Schedule

Starting July 8, 2024

Mail payments to:

James Campbell High School

ATTN: Accounting Office

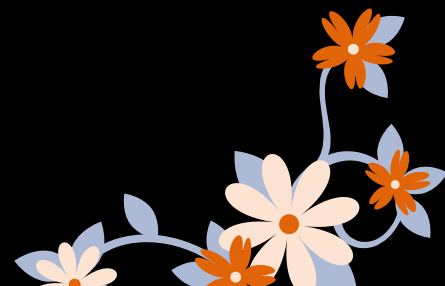
91-980 North Road

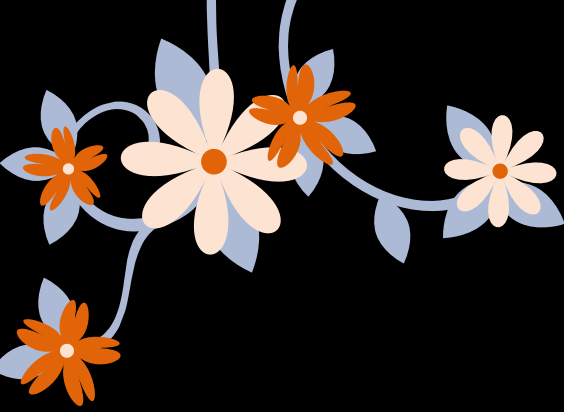
Ewa Beach, Hawaii 96706

Or

Walk in payments will be from Monday - Friday, starting July 8, 2024  
between 8:30 am- 3:00 pm in the A-5.

**CASH OR CHECK ONLY**  
**EXACT AMOUNT PREFERRED**





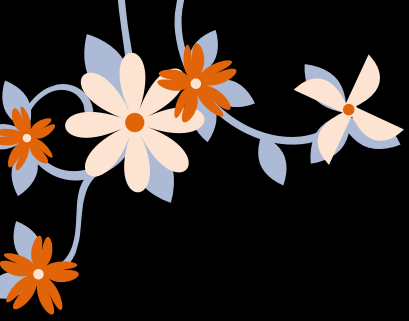
# ID Picture Taking (These are NOT yearbook photos!)

8:30 am - 2:00 pm in Room A2/A3

# JULY 2024

Monday	Tuesday	Wednesday	Thursday	Friday
1	2	3	4 <b>HOLIDAY</b>	5
8 Summer School 8 AM to 2 PM	9 Last day of Summer School	10 Freshman & ENRB 8:30 AM to 2:30 PM	11	12
15 Health Science 8:30 AM to 2:30 PM	16	17 Health Science & Creative Media 8:30 AM to 2:30 PM	18	19
22 Public Human Services 8:30 AM to 2:30 PM	23	24 Public Human Services & STEAM 8:30 AM to 2:30 PM	25	26
29	30	31	MAKEUP DAY FOR ID'S	





# Technology Responsible Use Forms (TRUF)/Technology Responsible Use Guidelines (TRUG) [Freshmen/New Students Only]

TRUF Form link (Fill out this form):

<https://bit.ly/36Z5LGv>

TRUG link:

<https://bit.ly/2z1aQ4l>

Download the TRUF from the website

Sign the TRUF form and drop it off at the front office in the white designated box daily from 8:30 am-3:00 pm in front of Room A-2 starting Tuesday, July 8, 2024

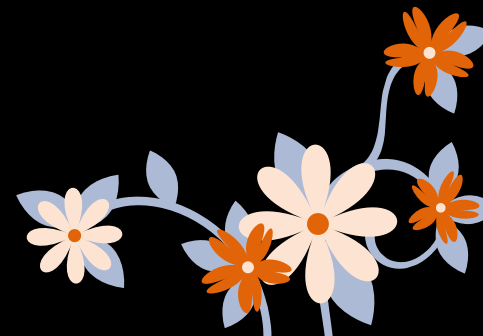
Blank TRUF forms will be made available.

## Schedules

Students will receive access to their schedules through Infinite Campus (IC) on Monday, July 15, 2024. Students make sure you can access your Infinite Campus account prior to July 15, 2024. If you need to reset your password for IC, please fill out the Google Form using the following link:

<https://forms.gle/ftfdiak1nKiwKQhi7>

A staff member will notify you of IC reset accounts from July 15- 29, 2024





## Grade 9, 10 and 11 Yearbook & ID Photos

8am to 1pm @ the gym

Friday, July 26 (Alpha A to F)

Monday, July 29 (Alpha G to N)

Tuesday, July 30 (Alpha O to Z)

DRESS CODE:

- Please wear tops that are appropriate for a portrait printed from the chest up. Tops containing tobacco, drugs, alcohol, sexual reference, profanity, and/or hostile in nature with respect to race, gender, religion, or disability are not permitted. Tops that draw the illusion that the chest and top are exposed such as tube tops and tank tops with spaghetti straps are also prohibited. HIGHLY Recommended: school uniform or job interview attire.

## Lunch Money Deposit

### Option 1

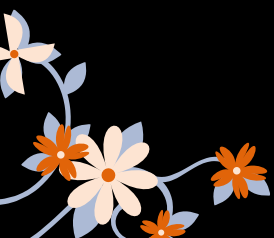
Pay for your child's meals through the online service at [www.EZSchoolPay.com](http://www.EZSchoolPay.com). Instructions on how to create an account and make payment is found on the Hawaii Public School site (<https://bit.ly/ezmealpayments>). There is a surcharge fee of 1.99% per transaction.

### Option 2

In-person payments can be dropped off in meal payment box daily from 8:30 am-3:00 pm in Room A-2 starting Monday, July 8, 2024. Pre-Printed Envelopes are available. Fill out the information on the envelope, put your payment in, seal the envelope and place it in the secured metal collection dropbox. Free and Reduced Lunch Applications:

Apply for Free and Reduce Lunch at  
<https://secure.ezmealapp.com/ApplicationScreen.aspx>  
Hard copy applications will be available at a later date.

---







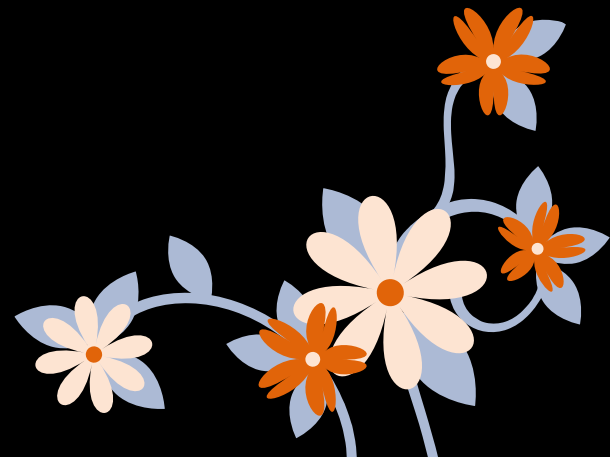
# Dress Code

The purpose of the dress code is to be consistent with our school vision, mission, and graduate profile. Appropriate attire in the classroom encourages a positive learning environment and promotes postsecondary and career preparedness. School ID must be worn at all times on the upper half of the body. Dress attire for students shall be appropriate. Clothing shall be worn at all times, buttoned, zippered, fastened, etc. Undergarments and underwear shall remain unseen. Swimwear is not allowed. Some type of footwear shall always be worn. Shoes with wheels are not allowed. Spaghetti straps, tube tops, halter tops or strapless tops are not allowed unless a non-see-through blouse or jacket is worn over it. Both shoulder straps shall be at least 1 (one) inch wide on tops and dresses. Students shall not expose midriff, buttocks, cleavage, and/or the entire back. Shorts, skirts, or dresses shall be long enough to cover the entire buttock and pelvis while standing and sitting. No drug, alcohol, tobacco (including e-cigarette) or weapons related attire or apparel, does not imply anything sexual and no nudity, gang related print or wording, gang style clothing, violent message/design or contraband paraphernalia shall be worn. Shades/sunglasses shall not be worn over the eyes in class.

If in doubt, don't wear it.

\*Students may be required to wear a JCHS logo shirt for school related activities.

Students must be in dress code while on campus, during work based learning experiences, and field trips. For athletic events students must adhere to dress code or the sport uniform.





# Professional Wear Optional Attire on Workforce Wednesdays

Professional Wear for all students

Business Professional

Business Casual

Aloha Attire

Blazer (optional) with complementary dress pants, dress shirt and tie with matching dress socks and dress shoes.

Blazer with complementary dress pants or skirt, and blouse with matching dress shoes.

Blazer with dress with matching dress shoes.

Collared short or long sleeve button-down dress shirt (tie optional) with complementary pants (dress or khaki) with dress socks and dress shoes.

Golf, polo, dri-fit collared shirt with complementary pants (dress or khaki) matching dress socks and dress shoes.

Blouse with a complementary skirt or pants with matching dress shoes.

Aloha shirt with complementary pants (dress or khaki) with socks and closed-toe shoes.

Aloha print dress or top with complementary skirt or pants with dress shoes.

\*Appropriate Socks

\*Dress Shoes= black, dark brown, tan, or white-colored heels, flats, loafers, sandals, wedges, boots, oxfords, wingtips, or Derbys

\*No plunging necklines, no spaghetti strap less than an inch. Length of skirts and dresses must not be shorter than mid-thigh. Pants must cover underwear or boxer shorts.

Additional options for Academy of Health Sciences students

Medical Scrubs (AHS logo preferred)

Needs to have closed-toed shoes, long pants and ID should be worn. Hair past shoulders must be up.

Additional options for Academy of Science, Technology, Engineering, Arts and Mathematics students

Automotive Pathway Students

JCHS Saber Garage Shirt and pants with closed-toe shoes

Building and Construction

JCHS Saber Build Shirt and pants with closed-toe shoes



## Optional Dress Tops and Health Academy Scrubs

Inquire in G-101 to order Health Academy Scrubs.





# Class of 2028 information

Class advisers

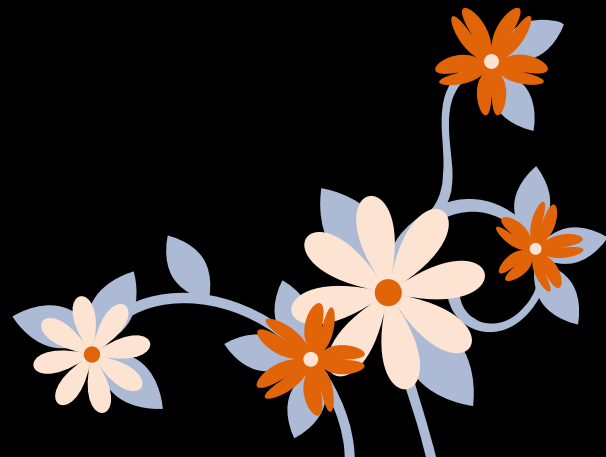
Mrs. Palmer, Ms. Alejandro, Ms. Aona, and Mr. Jardin



Class mascot: Jaguars

Class colors: Pink, gold, and white

If you are interested in becoming a part of the Class of 2028 council, please follow us on IG @jchs2028





# Saber Start Month

## July 2024